

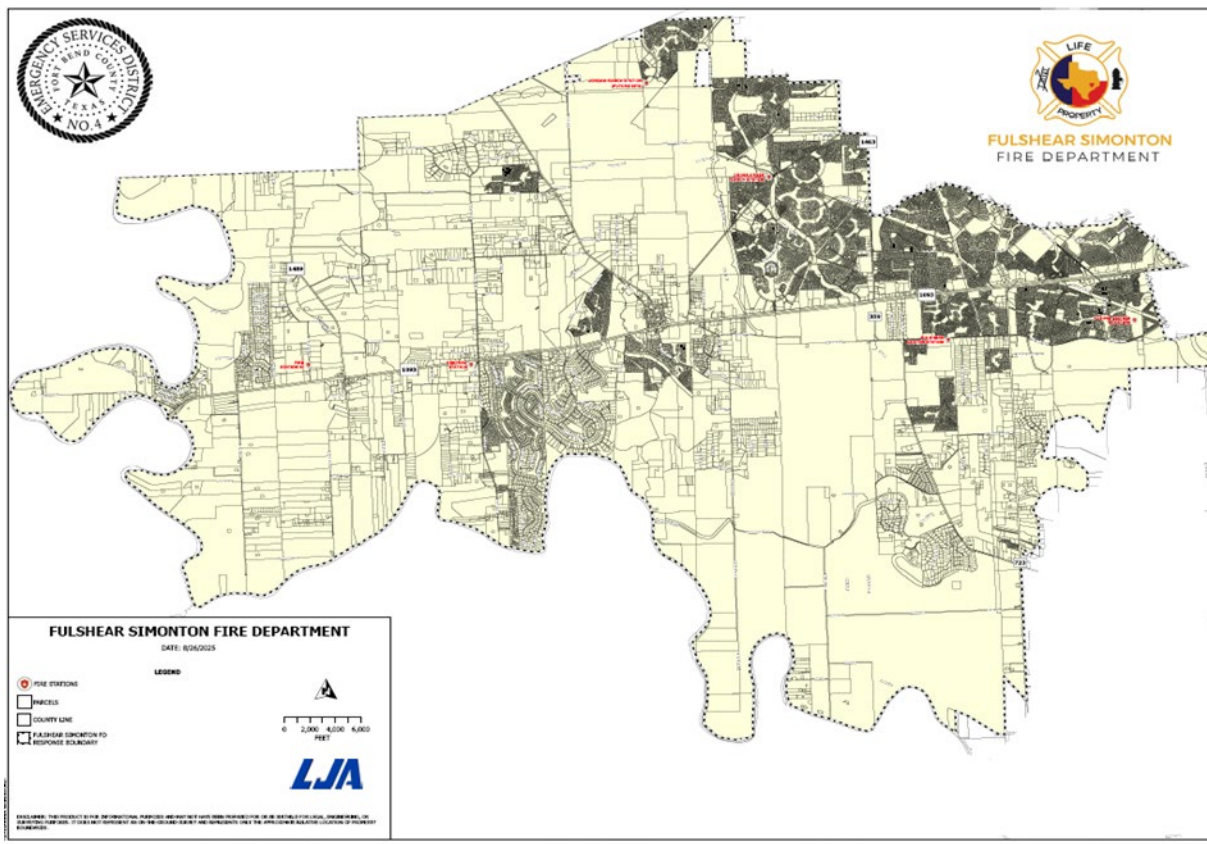
Fort Bend County Emergency Services District No. 4
May 2, 2026
Annexation Election
FAQs

1. What is an Emergency Services District ("ESD")?

An ESD is a political subdivision of the State of Texas that was created by and operates pursuant to the Texas Constitution and Chapter 775, Texas Health and Safety Code. Depending on the ESD's creation documents, an ESD can provide fire protection, emergency medical services or both.

2. What is Fort Bend County Emergency Services District No. 4 (the "District")?

The District was created in 2003 when it converted from Fort Bend County Rural Fire Prevention District No. 1 to the District. The District transitioned to being a self-provider of emergency services in 2019. The District serves the Cities of Fulshear, Simonton and Weston Lakes as well as large areas of unincorporated Fort Bend County. A map showing the current District boundaries is located below.



3. What is an annexation election?

Section 775.052, Texas Health and Safety Code, allows ESDs to expand their territory, upon petition, through an annexation election. In order for the annexation election to take place, qualified voters who own taxable real property in a defined territory that is not included in an ESD

may file a petition with the board of commissioners of an ESD requesting the inclusion of the territory in the ESD. The petition must be signed by at least 50 qualified voters who own taxable real property in the territory or a majority of those voters, whichever is less. Once the ESD receives the petition, and provides proper notice, the ESD board then holds a public hearing on the petition. If after the hearing the ESD board determines that the annexation would be feasible and would benefit the ESD, the ESD board may approve the annexation. The annexation of the territory becomes final when approved at an election by: 1) a majority vote of registered voters in the ESD **and** 2) a majority vote of registered voters in a separate election in the territory to be annexed. Once added, the annexed area would thereafter be subject to paying ad valorem taxes to an ESD for its services.

If an ESD has outstanding debts or assesses taxes, the voters in the annexation elections must also determine if the annexed area would assume its proportion of the debts or taxes if added to the ESD.

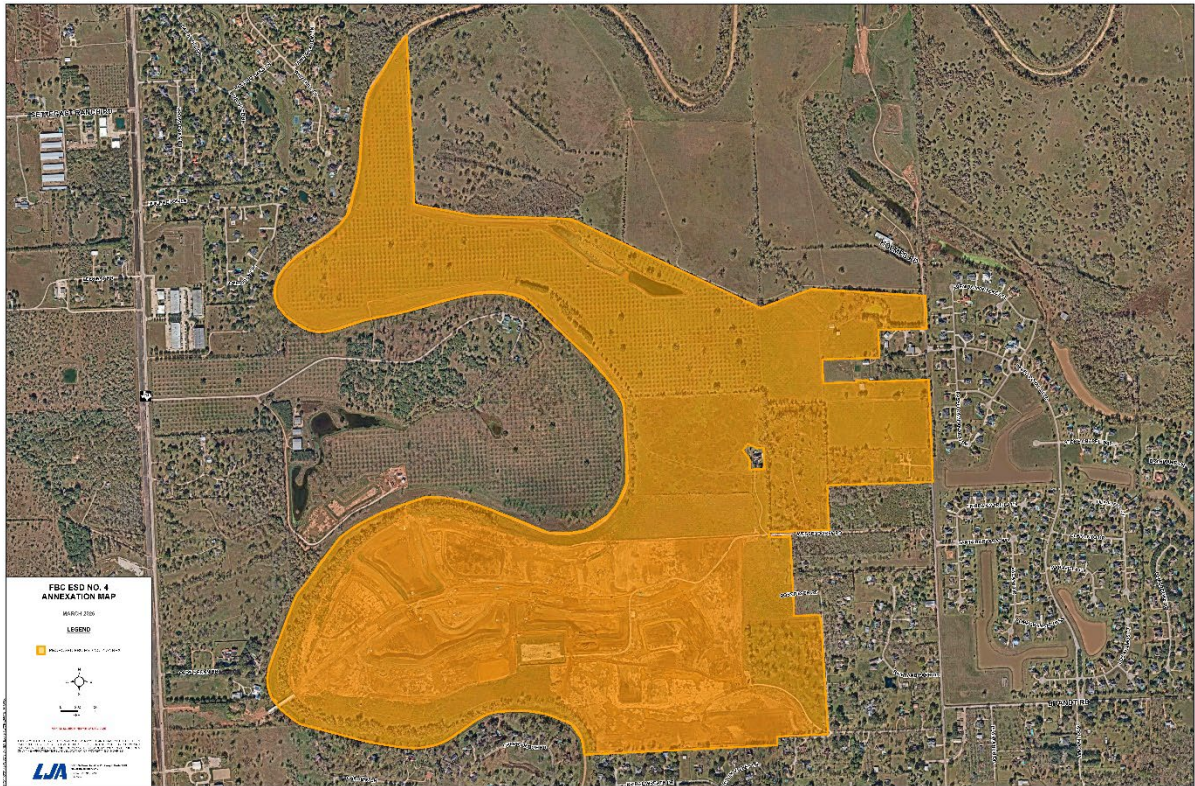
4. Why did the Board of Commissioners of the District (the "Board") order this annexation election?

The Board received and reviewed a Petition Requesting Inclusion of Territory Into the District (the "Petition") at the December 16, 2025 Board meeting. The Petition was submitted by a majority of qualified voters who also own taxable real property in the annexation area and requested that the District add that real property into the District.

After the required notice, the Board held a public hearing on the Petition on January 20, 2026. After the public hearing concluded, the Board determined that annexation of the territory into the District would be feasible and would benefit the District and, accordingly, approved the annexation and ordered the annexation election to take place on May 2, 2026.

5. Where is the area proposed to be annexed by the District?

The Notice of Election is posted on the District's website and includes the metes and bounds description of the 694.969 acre area proposed to be annexed (the "Annexation Area"). The Annexation Area is also shown in orange on the map below. The Annexation Area is located east of FM 723 adjacent to the District's southeast boundaries.



6. What will the ballot look like?

There will be a ballot for the registered voters of the District and a separate ballot for the registered voters of the Annexation Area. The sample ballot will be posted on the Fort Bend County Elections website and on the District's website when it becomes available. The ballot will include the following propositions:

For the registered voters of the District:

PROPOSITION A

Adding the property described on the Notice of Election to Fort Bend County Emergency Services District No. 4.

PROPOSITION B

The property described on the Notice of Election assuming its proportionate share of the outstanding debts and taxes of Fort Bend County Emergency Services District No. 4, if it is added to the District.

For the registered voters of the Annexation Area:

PROPOSITION A

Adding the property described on the Notice of Election to Fort Bend County Emergency Services District No. 4.

PROPOSITION B

THIS IS A TAX INCREASE

The property described on the Notice of Election assuming its proportionate share of the outstanding debts and taxes of Fort Bend County Emergency Services District No. 4, if it is added to the District.

7. If the propositions pass, what is the impact to me? If the propositions fail, what is the impact to me? What happens if the propositions pass in the Annexation Area but not the District, or vice versa?

If both propositions pass, and you reside in the Annexation Area, you will be required to pay ad valorem taxes to the District for the fire suppression and other emergency services that the District will provide to you. If you are a current resident of the District, the District's service area will be slightly larger and the District will be receiving additional ad valorem taxes from the residents in the Annexation Area, but there will be no additional tax or debt impact to you due to the annexation.

If the propositions fail, and you reside in the Annexation Area, you will not be annexed into the District or served by the District. Because of this, you will also not be subject to paying ad valorem taxes to the District. If you are a resident of the District, the District will remain status quo.

If the propositions pass in the Annexation Area but not in the District, or vice versa, the Annexation Area will not be added to the District. Both sets of propositions are required to pass in order for the Annexation Area to be added to the District.

8. When is the election, where will it be held and how can I learn more?

The Annexation Election (the "Election") will be held on May 2, 2026 from 7:00 a.m. to 7:00 p.m. Early voting will be conducted at the following dates and times:

Monday, April 20, 2026 7:00 a.m. until 7:00 p.m.

(All early voting sites will be closed on April 21, 2026 for San Jacinto Day)

Wednesday, April 22, 2026- Saturday, April 25, 2026 7:00 a.m. until 7:00 p.m.

Sunday, April 26, 2026* 12:00 p.m. until 6:00 p.m.

*Some polling locations may be closed this day

Monday, April 27, 2026 – Tuesday, April 28, 2026 7:00 a.m. until 7:00 p.m.

To see the polling locations for the Fort Bend County Election Day and Early Voting polling places, please visit <https://www.fortbendcountytexas.gov/government/departments/elections-voter-registration>.

9. Who is eligible to vote in the Election?

To vote in: 1) the Election in the District: you must be a registered voter within the boundaries of the District, or 2) the Election in the Annexation Area: you must be a registered voter in the Annexation Area. For more information on registering to vote, please visit www.fortbendcountytexas.gov/government/departments/elections-voter-registration/voter-registration. The last day to register to vote in the Election is April 2, 2026.

**THIS INFORMATION IS NOT INTENDED TO INFLUENCE HOW A VOTER VOTES
BUT IS INTENDED TO PROVIDE FACTUAL INFORMATION ABOUT THE
ELECTION**

To receive a copy of this document translated, please contact Radcliffe Adams Barner PLLC at 713-237-1221 or rdriguez@rabfirm.com.